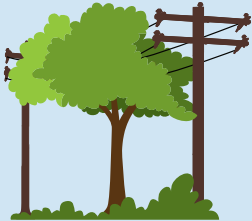
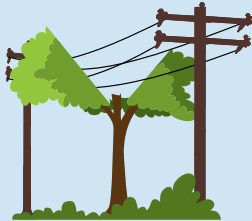


Trimming Methods

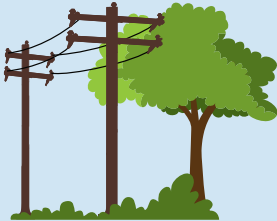
Utility crews contracted by JCREMC will be in your area within the next few weeks to trim trees that are too close to power lines. Below are the trimming methods used to gain proper clearance.



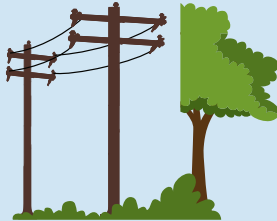
Before "V" pruning



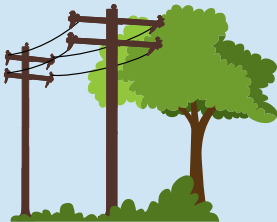
After "V" pruning



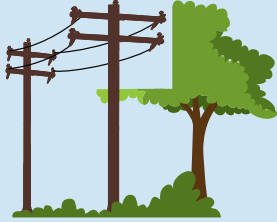
Before side pruning



After side pruning



Before "L" pruning



After "L" pruning

NOTICE TO OUR CONSUMERS

Utility crews contracted by JCREMC will be in your neighborhood in the next few weeks to trim trees that are too close to power lines.




JCREMC
Your Electric Cooperative

P.O. Box 309
Franklin, IN 46131
317-736-6174

jcremc.com




JCREMC
Your Electric Cooperative

For more information call
317-736-6174

Maintaining Safety and Reliability

Tree trimming is essential to maintaining electrical safety and reliability.

Lightning, ice, and high winds can cause trees to fall, so JCREMC works hard to properly trim trees around overhead power lines.

Each year, as part of our ongoing preventative maintenance program, we identify areas to clear trees and limbs away from pole-to-pole power lines.

Tree Removal or Trimming Considerations

JCREMC is required to maintain a minimum distance between tree limbs, energized wires, and equipment. To keep this clearance, we:

- Consider how much the tree will grow between now and the next trim cycle. Slower-growing trees require less trimming than faster-growing trees.
- Plan for weather conditions. We evaluate if strong winds will cause the tree to make contact with the wires and if movement in the wires, such as sagging due to high temperatures or the weight of ice, could cause the wires to contact the tree.
- Consider the impact of trimming on the overall health and stability of the tree.

If the tree is in the street right-of-way or a utility easement, the utility crew may remove the tree at its discretion.

Service Wire Trimming

(Line from the pole to your home)

JCREMC does not remove or heavily trim trees near service wires.

Property owners should schedule an appointment for JCREMC personnel to disconnect service so that the owner or a private contractor can safely trim or remove trees near a service wire. This will eliminate the risk of shock, severe injury, death. There is no fee for this service when performed Monday through Friday, 8:00 a.m. to 4:00 p.m.

What To Expect

- If a tree is too close to a power line, we will trim it.
- On routine cycle trimming, crews chip and haul away brush and small branches.
- Tree trimming is performed according to ANSI A300 standards.
- A tree may need to be removed if it is dead or dying, has a badly split trunk, leans dangerously close to wires, or is a fast-growing and weak-wooded variety.
- A JCREMC representative will contact you if a tree must be removed from your property.

Tall trees like:

- Maple
- Spruce
- Oak
- Pine

Plant the right tree in the right place

Plant taller trees away from overhead utility lines

