

## Species of Trees and Shrubs

Below is a list of some of the trees and shrubs compatible near or under power lines. Look for trees tagged with the Tree Smart logo.



### Recommended:

- Japanese Maple
- Paperbark Maple
- Cornelia Cherry Dogwood
- Smoke Tree
- Ivory Silk Japanese Tree Lilac
- Golden Rain Tree
- Akebono Cherry
- Mt. Fuji Flowering Cherry
- Sargent Cherry
- Crimson Cloud Hawthorn
- Washington Hawthorn
- Japanese Snowbell
- Sourwood
- Allegheny Serviceberry
- Carolina Silverbell
- Trident Maple
- Mt. St. Helens Plum
- Glorybower
- Amur Maackia

### Avoid Planting

- Bigleaf Maple
- Box Elder
- Silver Maple
- Catalpa
- London Plane, Sycamore
- Cottonwoods, Poplars
- Weeping Willows
- Douglas-Fir
- Western Red-Cedar
- Western Hemlock
- Deodara Cedar
- Spruces
- Pines

**Prior to planting, trimming or removing trees and vegetation near JCREMC's power lines, contact our office to talk to our Vegetation Management Coordinator.**



**P.O. Box 309  
Franklin, IN 46131  
317-736-6174**

**[jcremc.com](http://jcremc.com)**

## TREE CLEARING NEAR ELECTRICAL LINES

### A GUIDE FOR PROPERTY OWNERS



**For more information call  
317-736-6174**

## Maintaining Safety and Reliability

Keeping electrical transmission and distribution lines safe and reliable are critical priorities for JCREMC. The Key element in achieving these objectives is JCREMC's ability to construct, operate and maintain its electrical system and rights-of-way (the area under and around the lines).

You can help JCREMC keep rights-of-way clear of trees, brush and structures that could affect the safety and reliability of the electrical system. Utility crews contracted by JCREMC trim back vegetation that is too close to power lines.

## Before Planting Trees or Vegetation

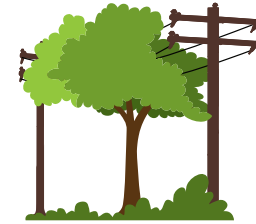
Check for overhead and underground facilities. A mature tree must have enough space away from power lines and an area large enough to accommodate the canopy and root system.

- Check for overhead power lines in the area.
- Consider how big the tree or other vegetation will be when fully grown.
- Find an area large enough to accommodate the canopy and root system.
- Keep shrubs, plants and other vegetation away from pad mount transformers (the green electrical box that sits on the ground).

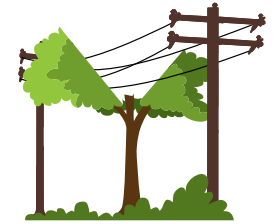
## Right-Of-Way Clearing

JCREMC is required to maintain vegetation around energized line and equipment. This is called right-of-way clearance. To keep clearance maintained we use various independent contractors for right-of-way clearing. When clearing right-of-way, our contractors cut back trees and other vegetation that's too close to overhead power lines. We communicate to property owners when right-of-way clearing will be done on their property.

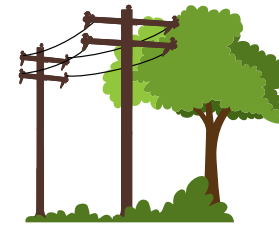
### Trimming Methods



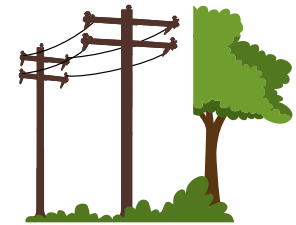
Before "V" pruning



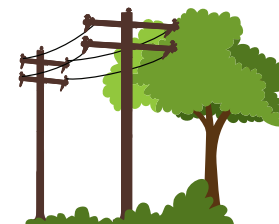
After "V" pruning



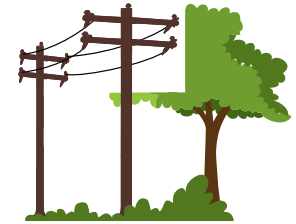
Before side pruning



After side pruning



Before "L" pruning



After "L" pruning

## Plant the right tree in the right place Plant taller trees away from overhead utility lines

Tall trees like:

- Maple
- Spruce
- Oak
- Pine

